

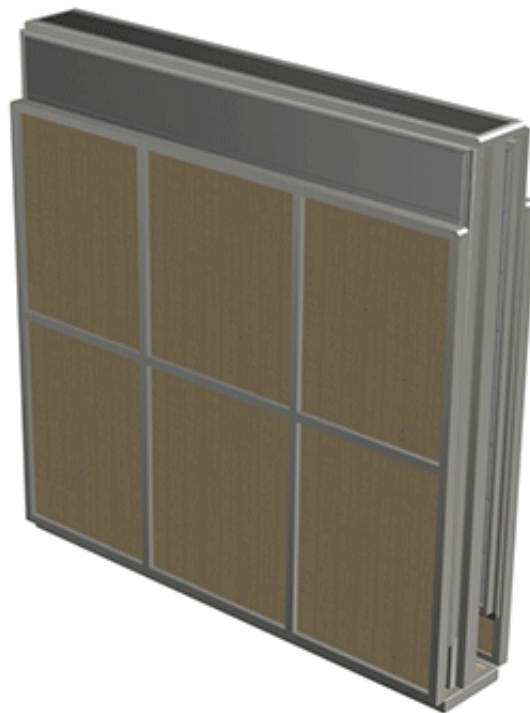
---

## Cheap PriceList for Accommodation Cabin Army Camp - Emergency Rooms - AMC BOX

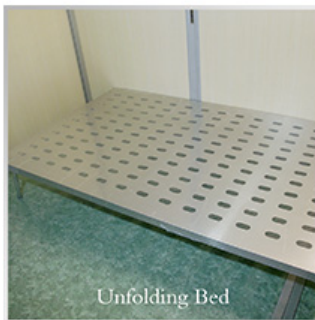
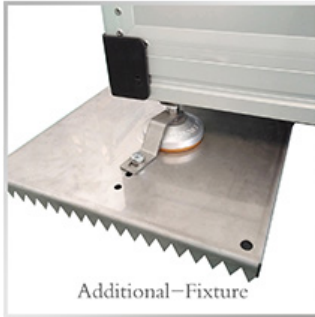
Emergency rooms, such as military mobile command center, emergency mobile command center, earthquake relief and so on. This is also the original intention of our product design. In the field training operations, usually choose the remote areas, the conditions are difficult. Tents are used to live in, but if it is cold or hot season, then tents can not meet the periodicity of living. Our aluminum folding house perfectly solves the requirement, 2 people on the site and 2 minutes is enough to complete the building of a single room for 8 people. Living in a comfortable environment. War and earthquake relief, the general temporary displacement from the residence for up to a year, aluminum folding houses can be quickly used in the field. More convenient is when the camp needs to be moved, it's the same, 2 people 2 minutes to complete folding, easy to enter the next camp.

### **UnFolding Steps:**

Open the package---Spread out the floor---Spread out the roof---Spread out the window&door



### **Accessory Introduction**



## Accessory Configuration

## MODEL: A0623

( Unfold(L\*W\*H)mm: 4600\*2300\*2500; Fold(L\*W\*H)mm: 600\*2300\*2500 Dimensions can be customized )

CATEGORY	STANDARD ●	OPTIONAL ○	REMARKS
<b>BASIC STRUCTURE</b>			
Broken bridge Aluminum Structure		○	Colors are optional
Non-Broken bridge Aluminum Structure	●		Colors are optional
Al plate + polyurethane + Anti-fire board	●		Colors are optional
Honeycomb aluminum floor	●		
PVC Aviation ground glue	●		Colors are optional
Ground insulation film		○	
<b>ELECTRICITY</b>			
Aluminum aviation socket	●		Brand and quantity adjusted according to actual situation
Bull USB socket	●		Brand and quantity adjusted according to actual situation
Bull switch	●		Brand and quantity adjusted according to actual situation
Delixi leakage protection	●		Brand and quantity adjusted according to actual situation
RVV Flame retardant wire	●		Brand and quantity adjusted according to actual situation
Indoor LED Lightings	●		Brand and quantity adjusted according to actual situation
Outdoor LED Lightings	● Standard configuration for broken bridge frame		Brand and quantity adjusted according to actual situation
<b>ADJUSTING SYSTEM</b>			
Foma universal wheel	●		
Adjusting ground cup	●		
Ground fixing parts		○	
Horizontal bubble	●		
<b>WINDOWS&amp;DOORS</b>			
Doors&windows Acrylic board	●		
Aluminum doors&windows	●		
Acrylic skylight		○	
Kennedy lang lock	●		
Kennedy lang hardware	●		
Corner injection part	●		
Stainless steel parts	●		
Border fillet processing	●		
<b>INTEGRATION CONFIGURATION</b>			
Cozy integrated bathroom	/	/	Brand and quantity adjusted according to actual situation
Gree Air conditioning	/	/	Brand and quantity adjusted according to actual situation
2 separate bathrooms	/	/	Brand and quantity adjusted according to actual situation
Table	/	/	Brand and quantity adjusted according to actual situation
Closet	/	/	Brand and quantity adjusted according to actual situation
Carbon fiber heating		○	Brand and quantity adjusted according to actual situation
Water purification equipment		○	Brand and quantity adjusted according to actual situation
Photovoltaic power generation		○	Brand and quantity adjusted according to actual situation
Electric sunshade		○	Brand and quantity adjusted according to actual situation
Projector	/	/	Brand and quantity adjusted according to actual situation
Folding soft bed	/	/	Brand and quantity adjusted according to actual situation
Stretcher bed		○	Brand and quantity adjusted according to actual situation



Product link : <https://www.amcbox.com/?p=7712>